

WINSTON TRAILS PARCEL FIFTEEN

PART OF WINSTON TRAILS P.U.D.
BEING A REPLAT OF TRACT C,
"WINSTON TRAILS EAST"
(PB 85, PGS 74-78)

SITUATE IN SECTION 2, TOWNSHIP 45 SOUTH, RANGE 42 EAST
PALM BEACH COUNTY, FLORIDA
JULY, 1998 SHEET 3 OF 5

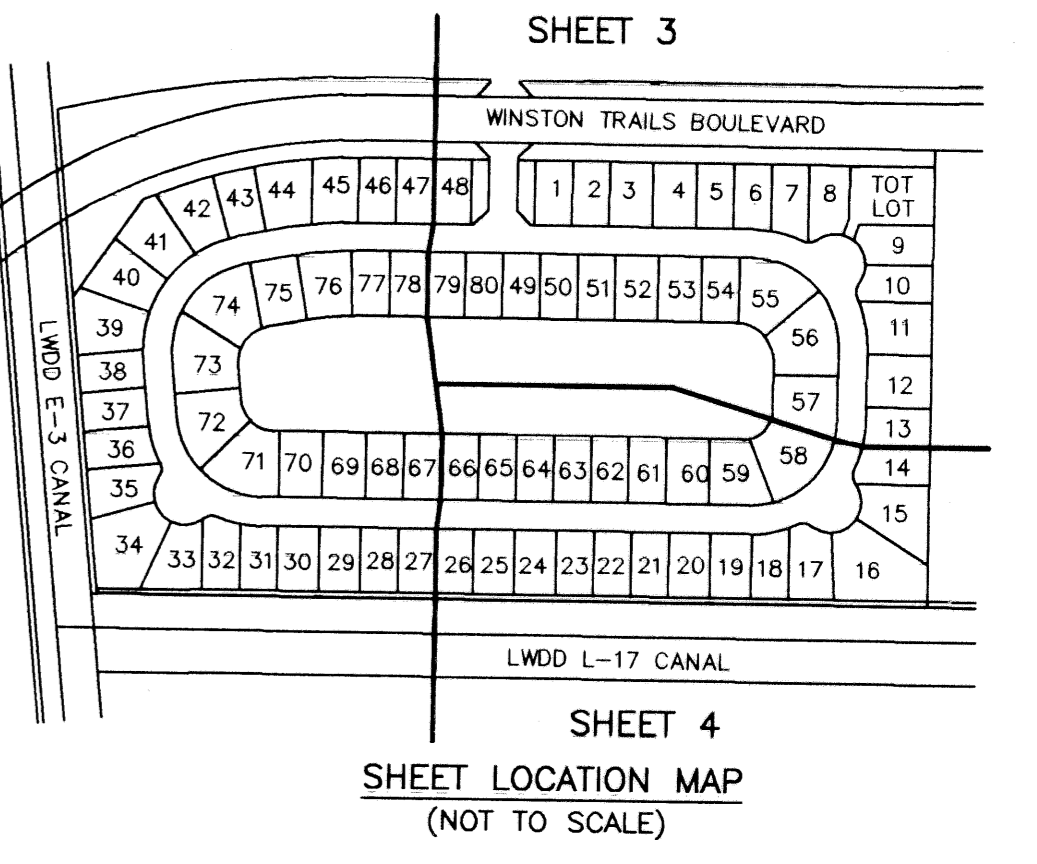
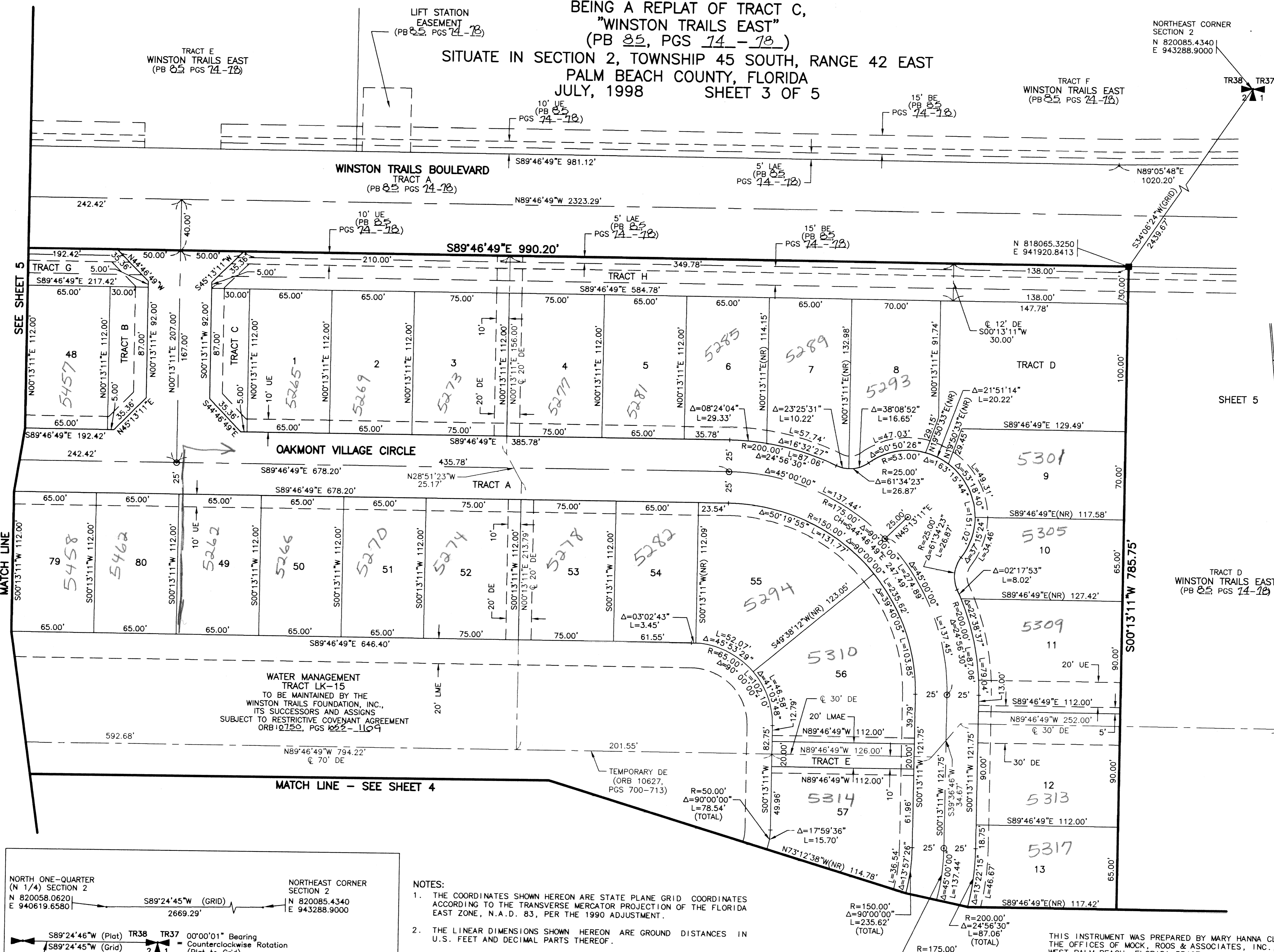
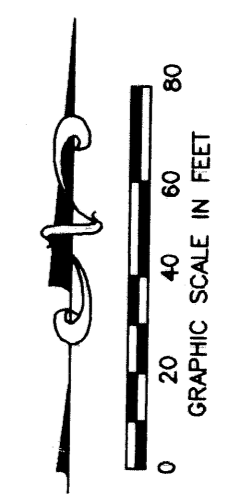
0587-025

124

STATE OF FLORIDA
COUNTY OF PALM BEACH

THIS PLAT WAS FILED FOR
RECORD _____ DAY OF _____
AD, 1999 AND DULY RECORDED
IN PLAT BOOK _____ ON PAGES
_____ AND _____

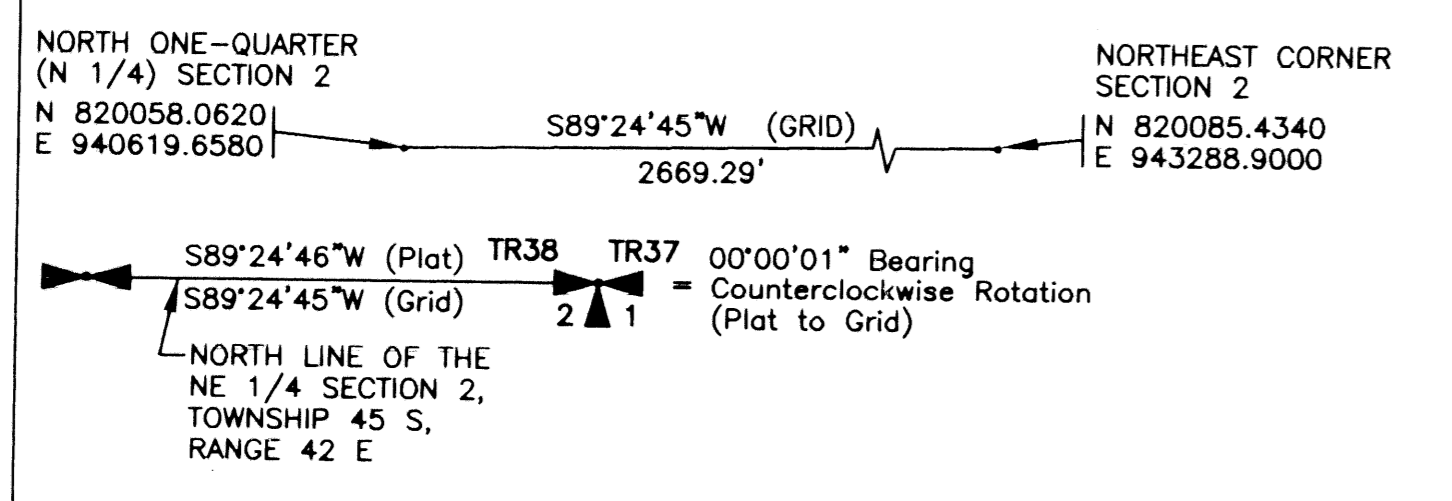
DOROTHY H. WILKEN, CLERK
BY: _____, D.C.



LEGEND

- L ARC LENGTH
- AE ACCESS EASEMENT
- BE BUFFER EASEMENT
- Δ CENTRAL (DELTA) ANGLE
- CH CHORD
- DE DRAINAGE EASEMENT
- FPL FLORIDA POWER & LIGHT
- LAE LIMITED ACCESS EASEMENT
- LME LAKE MAINTENANCE EASEMENT
- LMAE LAKE MAINTENANCE ACCESS EASEMENT
- LWDD LAKE WORTH DRAINAGE DISTRICT
- PUD PLANNED UNIT OF DEVELOPMENT
- (NR) NON-RADIAL
- ORB OFFICIAL RECORD BOOK
- PG(S) PAGE(S)
- R RADIUS
- (TYP) TYPICAL
- UE UTILITY EASEMENT
- PERMANENT REFERENCE MONUMENT
- PERMANENT REFERENCE MONUMENT
- PERMANENT CONTROL POINT
- ⊕ SET PLS# 4763
- ⊖ SET PLS# 4763
- ⊙ CENTERLINE

- NOTES:**
1. THE COORDINATES SHOWN HEREON ARE STATE PLANE GRID COORDINATES ACCORDING TO THE TRANSVERSE MERCATOR PROJECTION OF THE FLORIDA EAST ZONE, N.A.D. 83, PER THE 1990 ADJUSTMENT.
 2. THE LINEAR DIMENSIONS SHOWN HEREON ARE GROUND DISTANCES IN U.S. FEET AND DECIMAL PARTS THEREOF.
 3. THE GROUND DISTANCE TO GRID DISTANCE SCALE FACTOR IS 1.000337 (GROUND DISTANCE X SCALE FACTOR = GRID DISTANCE).
 4. THE FILING OF THIS PLAT EXTINGUISHES THAT PORTION OF THE EASEMENT RECORDED IN OFFICIAL RECORD BOOK 10627, PAGE 700 THROUGH 713, OF THE PUBLIC RECORDS OF PALM BEACH COUNTY, FLORIDA, WHICH IS LOCATED ON THE PROPERTY SUBJECT TO THIS PLAT.



THIS INSTRUMENT WAS PREPARED BY MARY HANNA CLODFELTER, P.S.M. IN THE OFFICES OF MOCK, ROOS & ASSOCIATES, INC., 5720 CORPORATE WAY, WEST PALM BEACH, FLORIDA 33407.

SCALE:
1" = 40'

P.A. NO.:
98008.50

DATE:
JULY 1998

DRAWING NO.:
45-42-02-121

MOCK • ROOS
ENGINEERS • SURVEYORS • PLANNERS

5720 Corporate Way, West Palm Beach, Florida 33407
(561) 683-3113, fax 478-7248

WINSTON TRAILS
PARCEL FIFTEEN
PART OF WINSTON TRAILS P.U.D.
BEING A REPLAT OF TRACT C,
"WINSTON TRAILS EAST"
(PB 85, PGS 74-78)
SECTION 2, TOWNSHIP 45 SOUTH, RANGE 42 EAST
PALM BEACH COUNTY, FLORIDA

SUBDIVISION Winston Trails 15
BOOK 85
PAGE 124
FLOOD ZONE B
QUAD # 34
SE 87-113
TAZ 197
FUD NAME Winston Trails

REV: 04-06-99
CAD FILE:
MUSSWTEP/WTEPRP11